

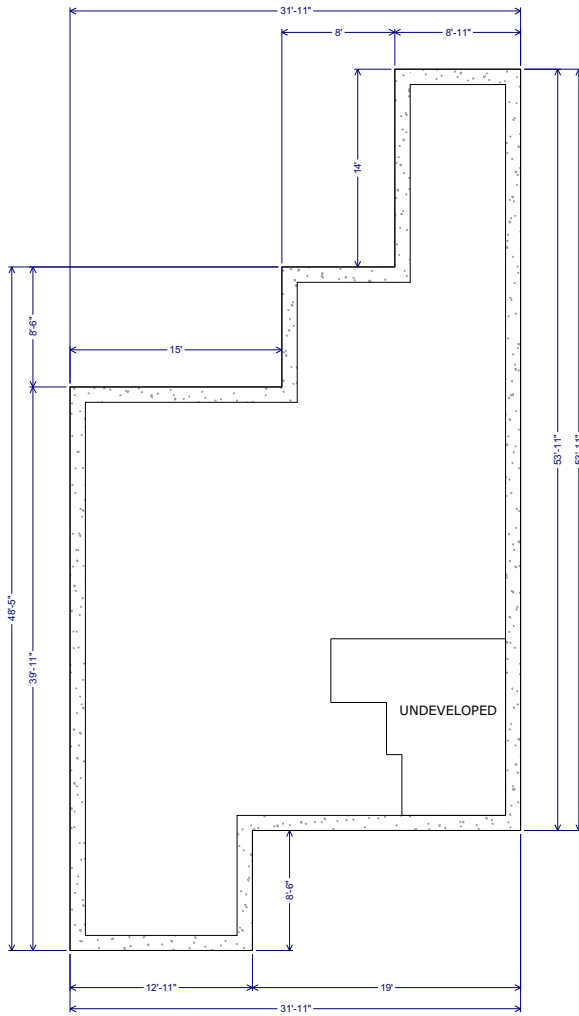
98 COOPERSTOWN COURT SW, AIRDRIE, AB

MAIN - 1401.43 Sq.ft. / 130.19 m2  
UPPER - 1299.42 Sq.ft. / 120.72 m2  
RMS TOTAL - 2700.85 Sq.ft. / 250.91 m2  
BASEMENT - 1381.01 Sq.ft. / 128.30 m2  
\*FINISHED TOTAL - 1262.77 Sq.ft. / 117.31 m2

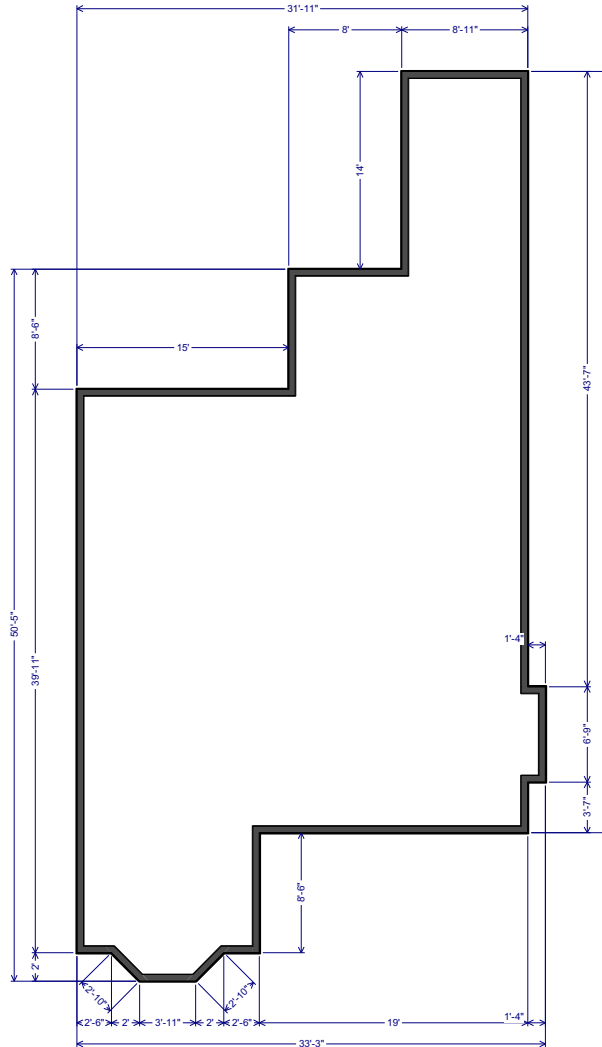
SERGHEI CICALA  
CENTURY 21 POWER REALTY  
403.370.3335  
CICALASERGHEI@GMAIL.COM  
JULY 21, 2019

### DETACHED SINGLE FAMILY

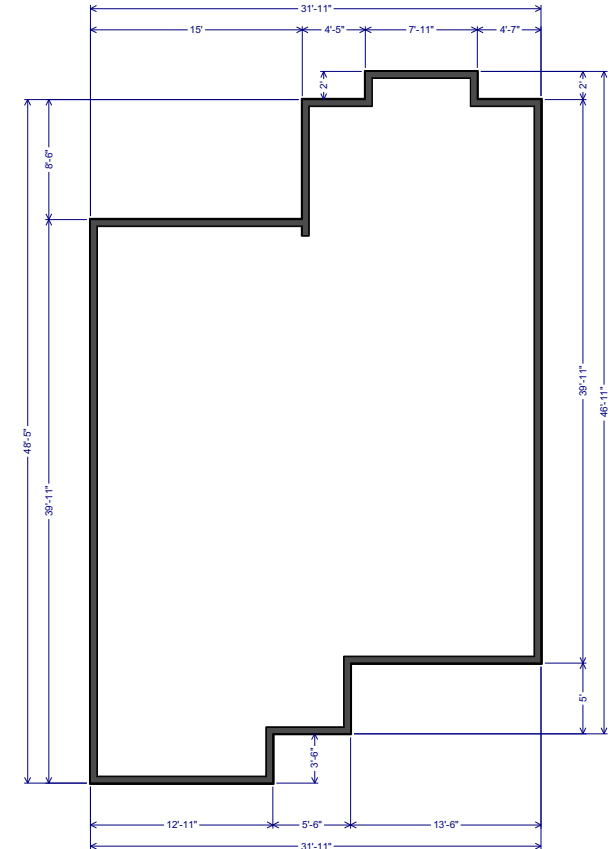
\*RECA RMS MEASUREMENTS ARE TAKEN TO EXTERIOR FOUNDATION



BASEMENT



MAIN LEVEL



UPPER LEVEL